



Fall Seminar 2023

Grade 10

International Baccalaureate Program
Palm Harbor University High School

How we approach Teaching & Learning in IB



The Pre-IB Years: Approaches to Teaching and Learning

Study for depth of understanding and connections among concepts that may not immediately appear related

Each course is important – You cannot sacrifice one for another

Managing your time is critical. Use a calendar and have a plan for all assignments and assessments. Use your planner AND Diploma Support class!

How can you support the IB Approach to Teaching and Learning?

Where & How
does your student
study?

- Do they plan breaks?
- Do they change the type of homework/studying every 45 minutes to switch their brain's gears?
- Location matters: think noise, brain association, distractions

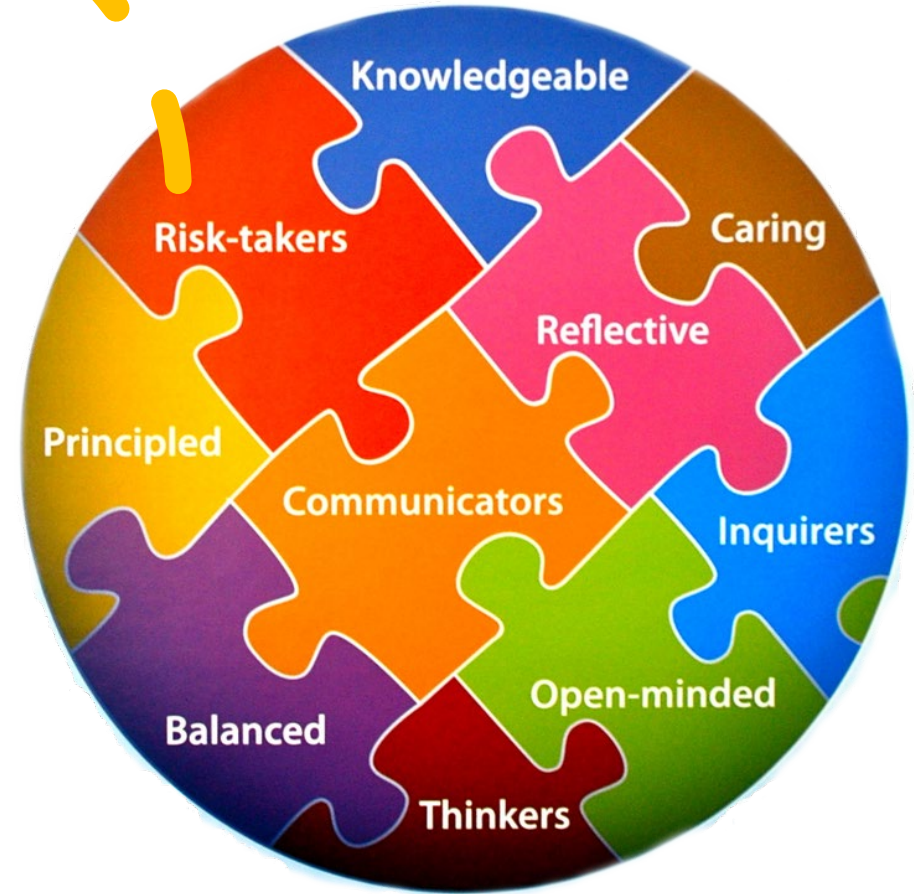
How do they
organize their
time?

- Planners
- Making time for joy
- Focusing on A day A night, B day B night, C day C night

The IB Core our Pre-IB students are introduced to gradually through the common planning of their teachers and staff

- CAS
- TOK
- EE

These are an integrated whole in developing ourselves with the attributes of the IB Learner Profile



The IB Core

– CAS

Students in
IB will earn
their Bright
Futures
through CAS
in Junior
Senior Year

Creativity-Activity-Service

Divided among the three areas

Planned (approved)

Activities carried out continuously over time

Documented; evidenced

Signed off by an objective adult supervisor

Required interviews and reflection

Final review by IB CAS Coordinator

The IB Core - TOK

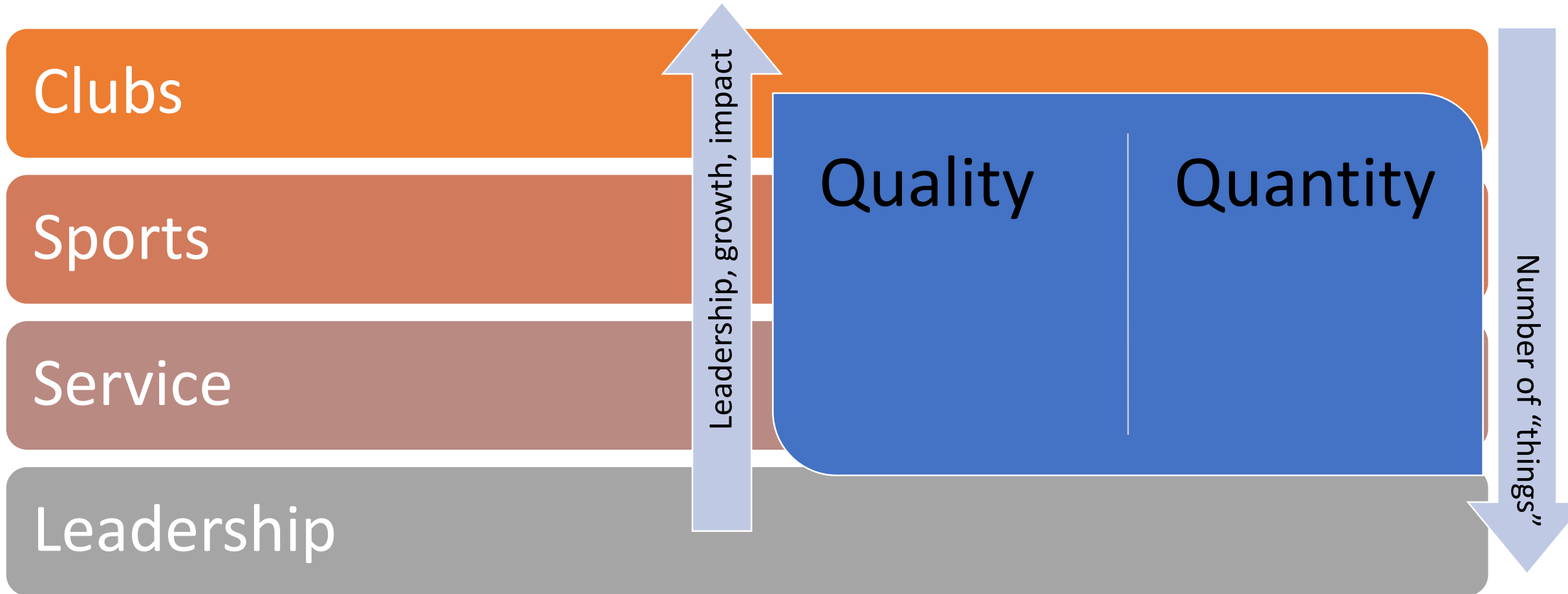
TOK Exhibition – assesses the ability of the student to show how TOK manifests in the world around us. Takes place during Junior year.

TOK Essay – examines one of the areas of knowledge. Takes place during Senior year.

TOK assessments are neither an essay nor a report on a topic. Students must deeply examine “Knowledge Questions.”

Start Preparing for CAS...

How is your student getting involved?



Advanced Placement Support

- AP Classroom
 - Log in with College Board Account
 - Daily Videos
 - Unit Progress Checks

Q1: Diminished Stimulus Sensitivity

Unit 3 Progress Check: MCQ

1 2 3 4 5 6 7 8 9 10 11 12 13 14 1 of 21

stimulus?

(A) Perceptual set

(B) Difference threshold

(C) Absolute threshold

(D) Transduction

(E) Sensory adaptation ✓

Item Details

Stimulus Type: Text
Question Type: MCQ

Unit And Topic

3: Sensation and Perception
• 3.1: Principles of Sensation

Skill Category And Skill

Skill Category 1: Define, explain, and apply concepts, behavior, theories, and perspectives.
• Skill 1.A: Define and/or apply concepts.

Additional Alignments

Question Set: No

3.1: DAILY VIDEO 1 This video is visible to all students on their homepage.

28% Watched ✓ Assigned

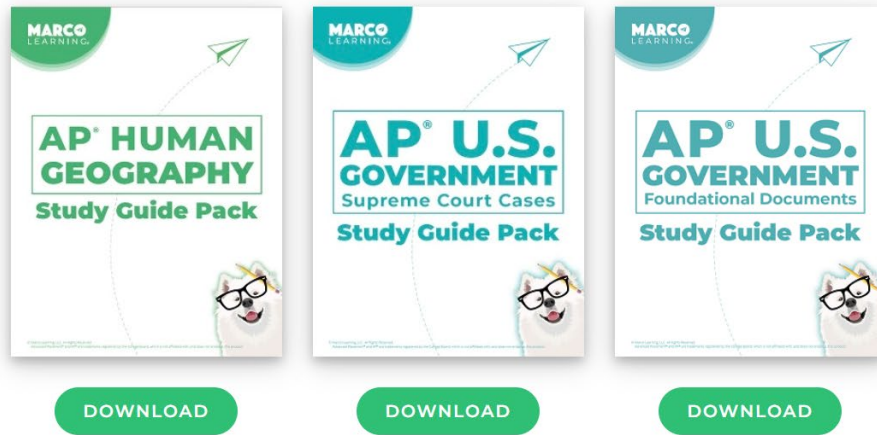
TOPIC 3.1

Principles of Sensation

AP Psychology

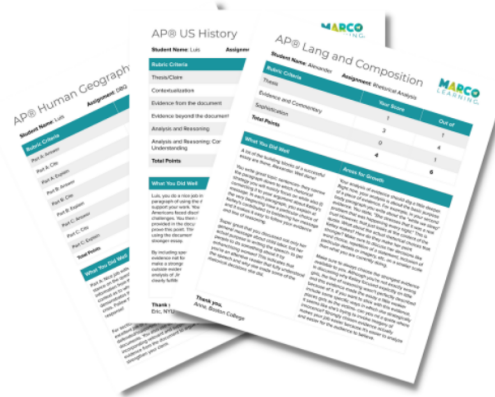
DAILY VIDEO 1

Free study guides and study guide packs for AP[®] Human Geography and AP[®] U.S. Government. Study guide packs include multiple study guides covering key content areas of the AP[®] HUG and AP[®] Gov Exams.



What Students Get

- **Individualized Feedback**
Personalized, hand-crafted reports designed to encourage students and help them improve
- **Inline Comments**
Detailed inline comments that highlight specific areas for revision



Click the thumbnail to view a sample report

Advanced Placement Support

- Marco Learning
- Free downloadable study packs
- Teacher assigned writing assignments with rubrics
- Student writing support (Individualized Feedback & Inline Comments)

Advanced Placement Support

- AlbertIO
- Log in via Clever
- Organized by unit
- Teacher assigned work or student independent practice
- Explanation of correct answers
- Explanation of distractors

This viewpoint probably comes from somebody who believes in what historical theoretical approach?

A Structuralism.

B Functionalism. 

C Gestalt.

D Dualism.

E Psychoanalysis.

✓ No answer was submitted for this question.

Explanation

Choice 'B', functionalism, is correct.

This approach, popular in the 1880s through the early 1900s, felt that it was next to impossible to really capture what people were thinking, feeling, or sensing because consciousness was a steady stream, not a collection of individual thoughts. They were also inspired by the ideas of evolution, which suggested that all behavior has a purpose.

Explanation of Distractors

The most direct opposite is Choice 'A', structuralism, which does want to understand what thoughts are "made of". If a functionalist was studying cars, she would focus on driving them, while a structuralist would take them apart.

Choice 'C', gestalt psych, was a German approach that looked at how the mind pulled together pieces of information into a whole. Choice 'D', dualism, is a philosophic position that the body and mind are separate things.

Psychoanalysis, Choice 'E', is Freud's general approach of looking for unconscious motivations to explain and help an individual.

Florida Bright Futures Scholarship Program

Parent and Student Quick Start Guide

Ensuring student compliance for Florida Bright Future Volunteer & Work Hours



STEP 1: Sign Into Your Account at profferfish.com

Select **LOG IN** from top navigation bar *(Important Note: Students and Parents use the Same Account)*

- If your school uses ClassLink or Clever, click on that link to access your account **or**
- Select **"Don't Have an Account? Sign Up"** *(Student name MUST match your Emergency Information Card)*

STEP 2: Discover Volunteer and Work Organizations & Opportunities

Pre-Approved Volunteer & Business Organizations

If an **organization** is pre-approved, you will find it here!
If not listed, you will need to submit for approval.

Pre-Approved Volunteer & Work Opportunities

If an **opportunity** is pre-approved, you will find it here!
If not, you will need to submit it for approval.

Submit a NEW Organization or Opportunity

If an Organization OR Opportunity is not on a pre-approved list, click here to submit it for approval.

STEP 3: Get your Volunteer OR Work **HOURS** Approved

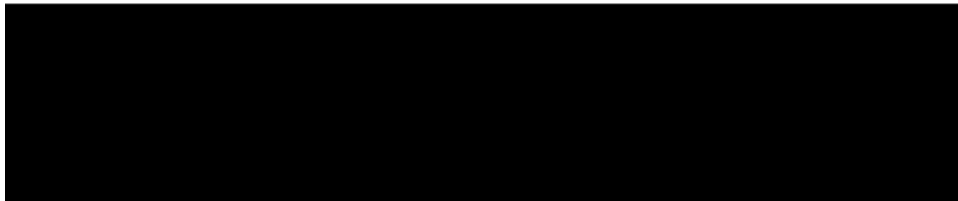


CONGRATULATIONS!

Empowering Students to Discover, Learn, & Lead
Through Community Involvement

Profferfish: How to videos

Introduction to Profferfish



How to activate your student account



More Profferfish How to videos

How to submit your hours



How to submit a new volunteer organization or business



Bright Futures

- FL Academic Scholarship

- 100 hours
- 1340 SAT
 - -or- 29 ACT
- 3.5 GPA

- FL Medallion Scholarship

- 75 hours
- 1210 SAT
 - -or- 25 ACT
- 3.0 GPA



IB Diploma

The diagram consists of two teal circles on a light blue background. The left circle contains the text 'IB Diploma'. To its right is an equals sign formed by two horizontal teal bars. The right circle contains the text 'Bright Futures Academic Scholarship'.

Bright
Futures
Academic
Scholarship

PSAT

Why Take the PSAT/NMSQT?

See your progress over every PSAT you have taken and track your improvement.

Your **SCORE REPORT** will give details on each question and answer. Show how you did, give the right and wrong answers and why.

The **SCORE REPORT** will also provide insight into strengths and weaknesses.

CAREERS: Explore careers that you're passionate about on BigFuture by taking the Career Quiz and learning how your test performance aligns to 1,000 occupations with our career readiness indicator.

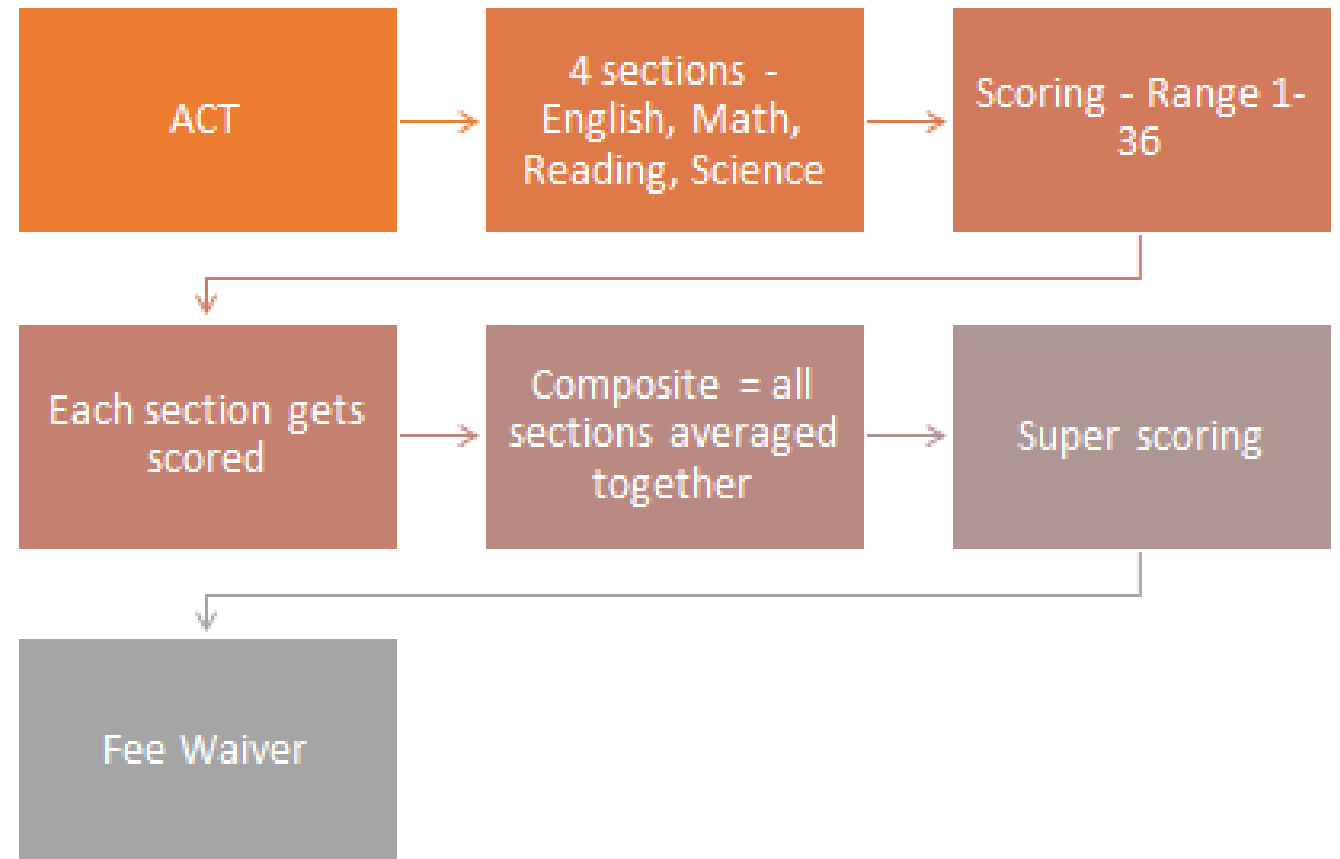
COLLEGES: Search over 3,000 college profiles on BigFuture to discover which colleges and programs are right for you. Filter by location, major, and more.

SCHOLARSHIPS: Use your scores to access scholarships from BigFuture Scholarships, and thousands of others.

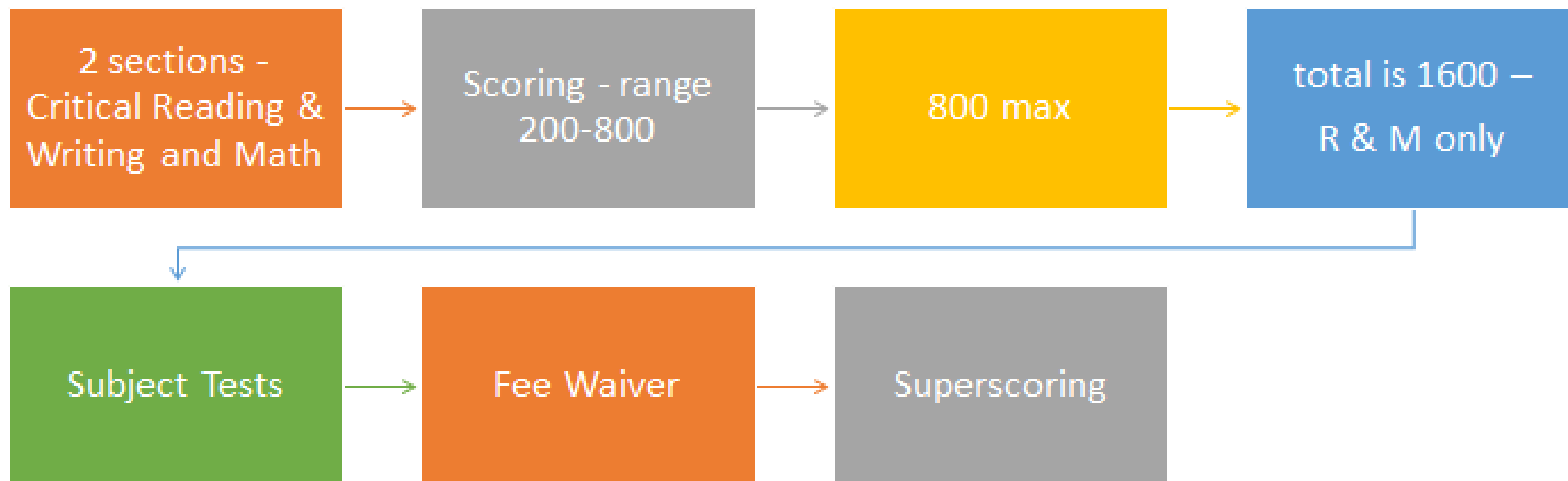
SAT PRACTICE: Send your scores to Khan Academy® for a free, personalized SAT practice plan based on your test results.

AP POTENTIAL: See which courses are offered at your school and which classes match a future major that may interest you.

ACT –
actstudent.org



SAT – collegeboard.org



Start Researching Colleges and Careers Now



Visit local colleges



Go online to check out colleges in subjects you're interested in and locations you'd love



Go to the virtual and in person College Fairs/visits in the community and at school



Talk to teachers, family friends, mentors about their careers and colleges they attended



Naviance is a customizable planning portal for students and families including self-discovery assessments, goal-setting, college research tools, and career exploration resources.

On Naviance, you can take a career interest inventory, complete a resume, search for colleges and explore a variety of post-secondary options.

Introductory Naviance video: <https://www.screencast.com/t/tbcYt9eUkKg>

Logging into Naviance

- Log into [Clever](#) and select the Naviance icon. You can also type "Naviance" into the search bar.
- Once you are in Naviance, scroll down to see your "Important To Dos and Tasks" and begin working on those. You can also click on "Planner" in the top tool bar and select "Tasks" to see what is required for you to work on.

Naviance

Search for Best Fit Colleges using SuperMatch

Request Counselor Recommendations/School Report

Request Transcripts

Request Letters of Recommendations from Instructors

Track application documents for all applications

We will work on Connecting Common App and Naviance next period

**Coffee or Tea
with
Mrs. S-T**

**Senior Parents –
Friday, September 22
7:30-8:15 am**

**Freshman - Junior Parents –
Friday, September 29
7:30-8:15 am**



Coffee or Tea with Mrs. S-T

Next meeting dates are
for parents of all grade
levels

- December 1st – 7:30 – 8:15 am
- February 9th – 7:30 – 8:15 am
- April 19th – 7:30 – 8:15 am





Freshman – Junior Parent Topics

- What to expect in IB
- How to help them have a successful year
- **BALANCE**
 - Study
 - Activities
 - Sleep
- Q&A
- <https://forms.office.com/r/b7DpH9NftT>

Freshman - Junior Parents –
Friday, September 29
7:30-8:15 am

https://www.pcsb.org/Page/39035

ue... Absolute Family Car... the EdFly - Mrs. Stavropoulos'... Mail - Evette J. Strib... UF MyUfl UF UF course page rwt Homepage - Rea

y Schools Translate

Palm Harbor University High
Home of the Hurricanes

Newsroom Calendar Contact

Stu

about Us Academics **Programs** Clubs and Activities Resources Get Engaged Athletics Calendar

ational
te Programme

ie

Sunday	Monday	Tuesday	Wednesday	Thursday	Friday	Saturday
August 2023						
			2 Pre-school	3 Pre-school	4 DWT Pre-school	5

://www.pcsb.org/Page/39035

Kahoot! - Create ne... Absolute Family Car... the EdFly - Mrs. Stavropoulos'... M

Home About Us Academics **Programs** Clubs and Activities

Discovery Night & Shadowing Information

IB Weekly Family Communication

IB Faculty

Fall Seminar

IB Learner Profile

ABC Calendar

IB Student Testimonials

IB in the News

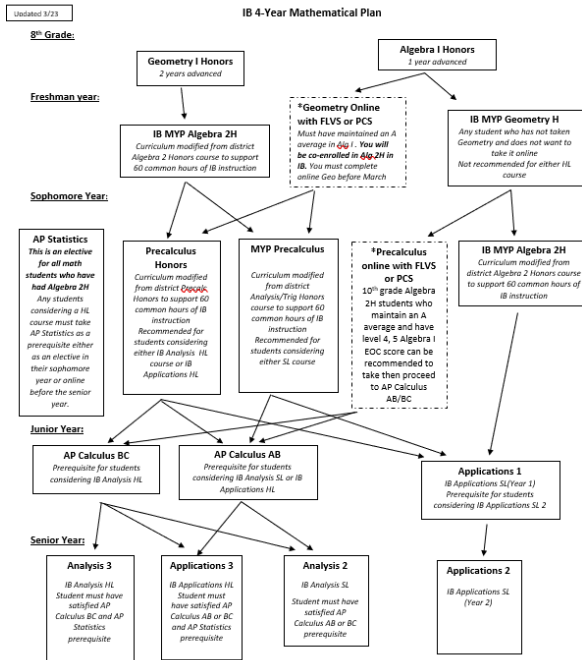
PHUHS Programs

C.W.M.P - Center for Wellness & Medical Professions

I.B. - International Baccalaureate Programme

C.A.B.A.M. - Career Academy of Business Administration & Management

Important Dates: Check Website ABC Calendar



*If you are interested in advancing your mathematical pathway the IB Programme offers several places for that to

IB Course Progression (handouts provided)

IB COURSE PROGRESSION				
	Grade 9	Grade 10	Grade 11	Grade 12
Language A (English)	English I Pre-Diploma	AP English Language	AP English Literature/Composition (SL/HL)	IB English Lit 4 (SL/HL)
Language B (Spanish/French)	Level 1/2 Pre-Diploma	Level 2/3 Pre-Diploma	IB Level 4 (SL/HL)	IB Level 5 (SL) IB Level 6 (HL)
Individuals & Societies (Social Studies)	AP World History	AP U.S. History	IB History of The Americas 1 (SL) Completed in 1 year** -or- IB History of The Americas 2 (HL)	IB Contemporary History 2 (HL)
Experimental Sciences	Biology 1 Pre-Diploma	Chemistry 1 Pre-Diploma	Biology 1 IB (SL) AP Biology (HL) and/or AP Chemistry (SL/HL) and/or Physics 1 IB (SL/HL)	Biology 2 IB (SL) Biology 3 IB (HL) and/or Chemistry 2 IB (SL) Chemistry 3 IB (HL) and/or Physics 2 IB (SL) Physics 3 IB (HL)
Mathematics	Algebra 2 Honors (MYP) -OR- Geometry Honors	MYP Geometry Honors -or- Geometry Honors -or- Pre-Calculus Honors	IB Applications and Interpretations 1 (SL) -or- AP Calculus AB (SL) -or- AP Calculus BC (HL)	IB Applications and Interpretations 2 (SL) -or- IB Analysis and Approaches 2 (SL) -or- IB Applications and Interpretations 3 (HL) -or- IB Analysis and Approaches 3 (HL)
Sixth IB Subject	Inquiry Skills Pre-Diploma	Traditional Elective -or- Physics 1 Honors (selected by 50% of our sophomores)	AP Psychology (SL/HL) -or- IB Theatre I (SL/HL) -or- IB Music (SL/HL) -or- IB Art I (SL/HL) -or- 2nd IB Science (SL/HL) -or- 2nd IB Language B (SL/HL)	IB Psychology 2/3 (SL/HL) -or- IB Theatre II (SL) IB Theatre III (HL) -or- IB Music II (SL) IB Music III (HL) -or- IB Art II (SL) IB Art III (HL) -or- 2nd IB Science (SL/HL) -or- 2nd IB Language B (SL/HL)
Seventh Subject	Traditional Elective	Traditional Elective	IB Theory of Knowledge 1	IB Theory of Knowledge 2

**Students whom completed the SL History in 1 year, have an additional choice to complete an 8th Subject: SL IB Film, SL IB Sports Exercise Science, SL IB Music, SL IB Theatre, complete an AP course, or General elective course.

IB, GPA, and College Course Credits



Students typically earn up to 45 college credits (Florida University System)



All Junior and Senior courses are IB courses—college level



All Freshman and Sophomore courses are Honors or AP level



Students may take Dual Enrollment and additional Honors, AP, etc. courses during the summer




Students may participate in executive internships during the summer after their Junior year



The majority of Universities accept IB credits in some way—see our website to learn more

IB	AP	DE	Benefits
Full Course Meal	Buffet	Home cooked meal	AP <ol style="list-style-type: none"> 1. Pick and choose 2. College Level Course with GPA advantage 3. Nationally recognized 4. Teachers trained by College Board
Curriculum set, monitored, & assessed by The International Baccalaureate Organization (IBO)	Curriculum set, monitored, & assessed by College Board	Curriculum set by local Junior College	IB <ol style="list-style-type: none"> 1. Internationally recognized 2. Interdisciplinary instruction between teacher teams/subjects 3. AP/IB teacher planning through District and site based teacher teams 4. Includes research opportunities highly recognized by colleges through internal assessments and extended essay in the Junior and Senior years 5. Teachers trained by IBO, most also trained by College Board 6. Students are in ALL Honors, AP, and IB level courses through 9-12 impacting their knowledge built and GPA
Programme Includes AP courses in progression and ability to take DE during summer	Individual Courses	Individual Courses	
Opportunity to earn college credit for IB courses based on exam (1.0 GPA weight based on grade), Honors credit for Pre-IB (.5 GPA weight based on grade)	Opportunity to earn college credit (based on exam) per course and 1.0 GPA weight (based on grade)	Opportunity to earn college credit based on grade and 1.0 GPA weight	DE <ol style="list-style-type: none"> 1. College Credit and GPA advantage 2. College Credits & GPA advantage 3. College Transcript Begun



Please
Welcome our
AMAZING IB DP
Student Panel

